



Columbus May 2019 Allocation Report

For Portfolio Rebalancing on **2019-04-30**

Content

1. Overview
2. Performance Summary
3. Upcoming Month's Allocations
4. Momentum & Volatility Analysis
5. Constraints & Optimal Weights
6. Discussion on this Month's Allocation
7. APPENDICES
 - A: 1998-2018 Algorithm Performance
 - B: Columbus Detailed Analysis
 - C: Historical Allocation
 - D: Columbus ETF Universe

1. Overview

Columbus is Laplace Insights™ adaptive asset rotation strategy trading on the US markets. It selects up to 8 assets from a universe of 15 low costs, highly liquid ETFs, each representing one of the world's major asset classes. Columbus uses a quantitative Algorithm to continuously monitor and adapt to market conditions. The Algorithm selects assets and adjusts their portfolio weights to optimize for the best risk/return tradeoff. It is designed to emphasize capital preservation during turbulent markets while capturing gains during bull markets.

Columbus benefits investors by enforcing a disciplined and rigorous methodology. Free of human emotions, the Columbus Algorithm delivers consistent performance over a wide range of historically different market conditions. It is designed to limit portfolio drawdowns during bear markets while producing returns in line with global equity markets during bull markets.

The Columbus 15 ETF universe was selected to represent the most relevant global asset classes. The strategy trades monthly on the last trading day of the calendar month.

2. Performance Summary

Figure 1 on the next page illustrates the Columbus simulated and live historical performance along with three key benchmarks:

- A Global Allocation Benchmark represented by mutual fund GMO Global Asset Allocation (GMWAX).
- The S&P500 Index ETF (SPY) represents the US equity markets.
- A no-skill Equal Weights benchmark based on equal weighting all 15 ETFs forming the Columbus universe.

The investment value-add (alpha) created by Columbus over time is shown by the double arrow located on the right side of the chart (Columbus Alpha Creation). This double arrow compares Columbus (shown in black) to the no-skill portfolio represented by the Equal Weights benchmark (shown in red). Comparing these two curves over the timeline shows how Columbus consistently generates returns every year above and beyond the Equal Weights no-skill portfolio. This excess return is readily seen as Columbus keeps distancing itself from its Equal Weights benchmark over time.

Columbus selects ETFs and adjusts their portfolio weights based on a combination of momentum, volatility and correlation of asset returns. Since the algorithm considers risk and volatility as paramount, it defaults to a conservative view whenever market conditions warrant it.

Columbus Performance and Key Benchmarks

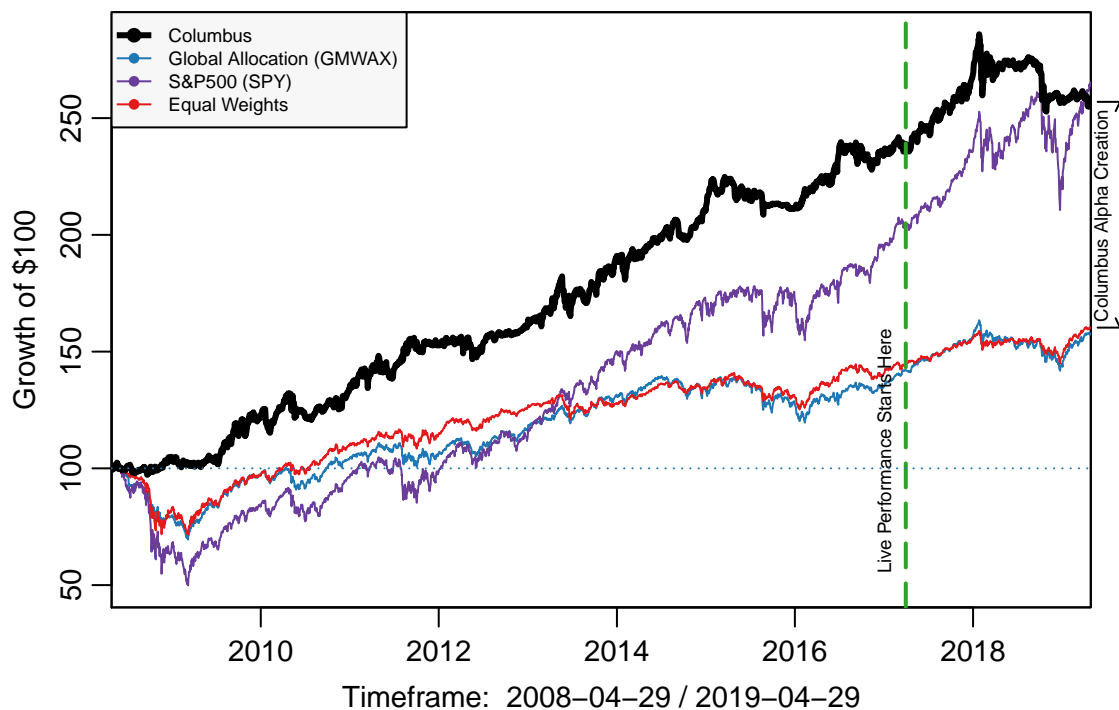


Figure 1

	Columbus	Global Allocation	S&P 500	Equal Weights
Annualized Returns (%)	8.97	4.23	9.29	4.39
Year-to-Date Return (%)	-0.2	8.99	18.1	8.46
Maximum Drawdown (%)	-11.58	-31.86	-51.49	-29.77
Positive Rolling Years (%)	92.73	78.66	90.5	84.46
Annualized Sharpe Ratio	0.97	0.43	0.47	0.46

The Columbus Algorithm has been extensively tested for resilience and statistical robustness using dozens of different mutual fund universes ranging from 13 to over 80 assets, and going back 20 years to 1998. In every case, the Columbus Algorithm consistently produced compelling risk-adjusted returns. More information on the technical details of our statistical testing methodology is available upon request.

Columbus may be used to adjust the tactical portion of a client portfolio. Since it is not constrained by asset class allocation, Columbus may be 100% invested in a single asset class in any given month. For example, during a low volatility equity bull market, it may be mostly weighted towards equities. On the other hand, it can also be expected to be heavily into cash assets or fixed income during times of high market uncertainty or stress. **The Columbus strategy is therefore suitable only for a portion of a client's portfolio that allows for full flexibility on asset class selection.**

Although the weights for each asset class are not constrained, a maximum exposure limit constraint is imposed on each ETF. For example, the maximum exposure to the iShares MSCI EAFE Index ETF (EFA) is 35%, as shown in the table on page 3 (the Max. Weight limit). Thus, in an ideal bull market condition, the algorithm will never be allowed to exceed a 35% exposure to this ETF. Such constraints force the algorithm to maintain a minimum level of diversification among multiple ETFs, no matter what the market conditions may be.

3. Upcoming Month's Allocations

The portfolio allocations for each asset are shown below for the current and the upcoming month. The upcoming month weights are in **bold characters** and should be used to rebalance the portfolio. The Max. Weight column shows the maximum exposure weight limit constraining each ETF. This represents the upper weight limit for that ETF during an ideal market situation, where momentum is high and volatility is low.

ETF	Max. Weight	Weight 2019-03-28	Weight 2019-04-29	Alloc. Change
SPY	50%	-	33%	33%
VXF	35%	-	17%	17%
EFA	35%	-	3%	3%
EWJ	25%	-	-	-
VWO	25%	-	17%	17%
DBC	30%	-	-	-
GLD	35%	4%	-	-4%
VNQ	30%	26%	20%	-6%
TLT	40%	37%	9%	-28%
IEF	50%	23%	-	-23%
LQD	30%	2%	-	-2%
TIP	40%	-	-	-
PCY	30%	5%	1%	-4%
UUP	50%	2%	-	-2%
SHY	100%	1%	-	-1%
Total		100%	100%	

Totals may not add up to 100% due to rounding errors. The model portfolio trades Market-on-Close (MOC) on the last trading day of the month, which is the market close on the trading day after this report is sent out to subscribers.

The maximum weight limits shown in the table above have been chosen to limit the exposure to specific ETFs in the portfolio. Only on occasions will the Columbus algorithm invest in an ETF at its maximum exposure level. Such situations require a market environment with compelling positive momentum combined with low volatility. For certain clients, such exposure levels may be too aggressive. Should that be the case, the client's advisor is urged to consider reducing the exposure to better suit his/her client's unique situation.

For a detailed discussion of the upcoming month's allocations, see Section 6.

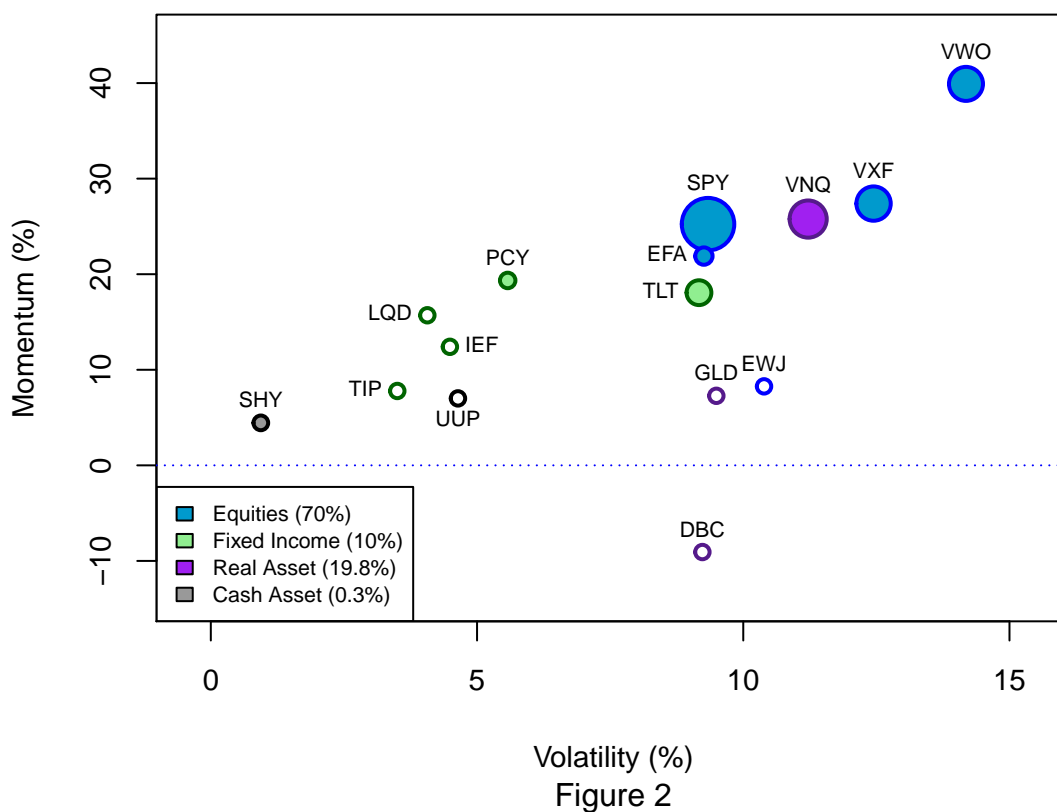
4. Asset Momentum and Volatility Analysis

Figure 2 below puts each asset in the Columbus universe on the momentum-volatility plane. The color of each dot represents the asset class each ETF belongs to, while the dot size shows the relative allocation weight for each ETF. An empty dot means the asset was not selected for the current month.

The Columbus algorithm selects and weighs assets in its universe based upon their relative volatility and a regularized momentum measure. It attempts to find the optimal combination of assets to get the most momentum at the lowest volatility, while also considering correlation between the assets selected.

The momentum-volatility plane does not explicitly show correlations. Some assets may therefore be more (or less) emphasized based upon their level of correlation compared to the overall portfolio.

Momentum – Volatility Bubble Chart



5. Constraints and Optimal Weights

Figure 3 below shows the optimal weight allocation for each ETF in the portfolio for the upcoming month. The green bars correspond to the optimal weights for each ETF as optimized by Columbus. The value of these are identical to the weights in the table on page 3.

The wider grey bars show the maximum weight limits for each ETF adjusted for the asset current volatility. In other words, it is the asset's theoretical maximum weight limit reduced by an amount related to the asset's recent volatility. This provides an important method for Columbus to contain portfolio volatility and control risk during turbulent market environments.

By overlapping the green bars over their associated grey bar, we can see how much Columbus chose to allocate to each asset vs. its allowable allocation limit. The allocation levels reflect the most optimal portfolio allocation for each asset.

More to the point, this chart tells us where Columbus finds the most optimal risk/return tradeoff for the upcoming month. When an ETF allocation (green bar) approaches its allocation limit (grey bar), Columbus is telling us that it greatly favors that asset class and its geographical region. Conversely, when the ETF weight is small compared to its limit, then Columbus shuns that asset class and/or its region, yet may still want some exposure because it offers a de-correlation benefit to the overall portfolio.

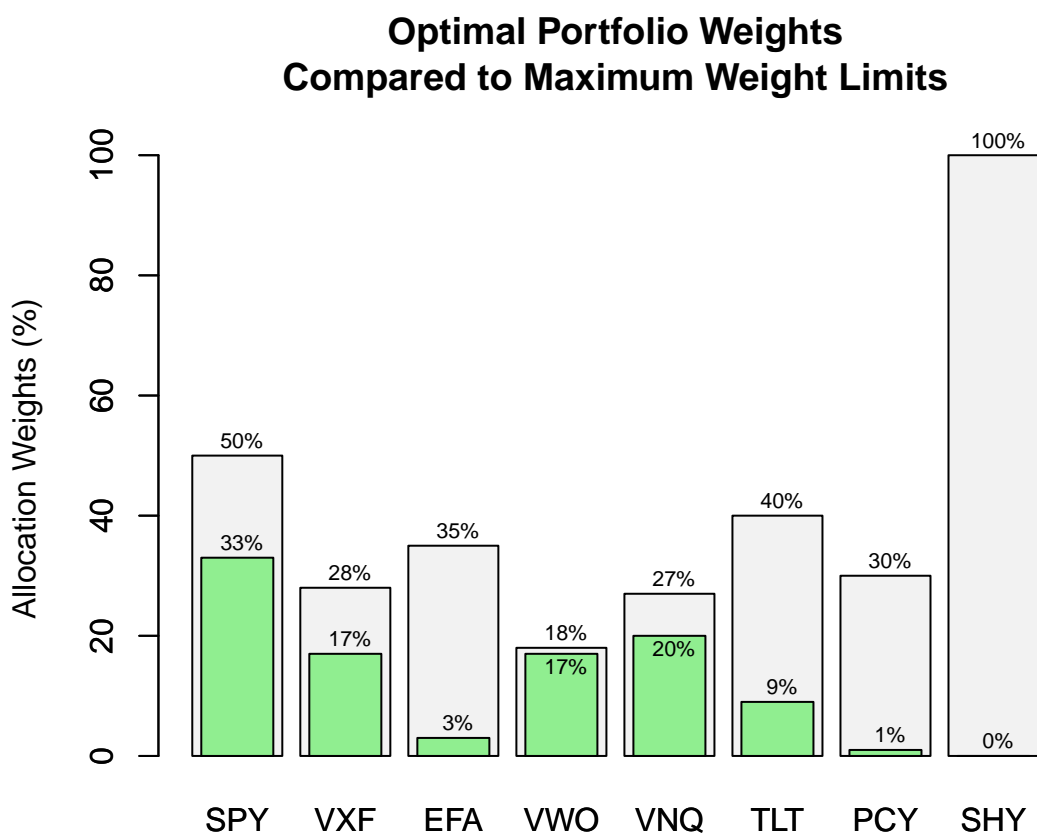


Figure 3

See the appendix for details on each ETF in the Columbus universe.

6. Discussion on Upcoming Month's Allocations

Up on Low Volume

Traders and analysts seem to be split in two camps these days: those who think we are testing the bull market top and the bear is imminent (a.k.a. a sucker's rally), and those who think the bull market is alive and well with much further room to go. There are compelling arguments to support both scenarios.

From a macro economic standpoint, things are looking relatively benign and stable at the moment. Trade tensions have evaporated for the most part (for now anyway). Last month's yield curve panic is behind us, and although there are many challenges elsewhere in the world, most US economic indicators are stable or positive. In other words, nothing obvious points to an immediate bear market.

What's been lacking lately however is trading volume, particularly on major index ETFs such as SPY and QQQ. Although this could be interpreted as a lack of investor interest, it is more likely that investors are sitting on the sideline after December's market scare, waiting for more data to come in before committing. If this is indeed the case, we could either see a reaffirmation of the bull market for some time, or we could see a rollback into correction territory if we get a series of negative news again. This is a perfect example demonstrating the value of adapting the portfolio based on data, rather than taking a dogmatic view such as those offered by numerous analysts. Ultimately, it doesn't matter whether a bear or a bull is in the offer. What matters is to position ourselves based on what the data tells us and not be afraid to change our stance later on, if and as needed.

So far this year, Columbus has been very prudent, getting us out of the stock market in late October before December's market rout. Now that things have settled for the better, Columbus is shifting back in the stock market, albeit in a somewhat cautious way. Our momentum – volatility bubble chart (Figure 2) tells the story. Since all stock ETFs are showing good momentum with reasonable volatility, Columbus shifted a good part of its portfolio into these. However, it's equally important to notice that fixed income ETFs are also showing decent momentum at a relatively lower volatility than stock ETFs. This implies that if the stock market sputters this coming month, it's likely that Columbus will switch back into fixed-income without asking questions. Note that Columbus is maintaining a near 30% weight between real estate and fixed income ETFs for the coming month.

As explained in our October 14, 2018 special report **“Keep Calm and Follow the Data”**, market tops usually behave erratically and are very challenging for money managers. The topping process can easily take many months if not years, when we can observe the market suffering corrections just to rally back to previous highs before correcting yet again, exhausting the bulls in the process and setting the stage for an eventual bear market. The current bull market is old, and although we may rally for a while still, it's key to understand that we are in the market's topping phase. In other words, this is a time to stay well diversified and manage risk carefully. As a strategy designed to be a tactical sleeve within an otherwise diversified portfolio, Columbus will attempt to capture upside when it demonstrates resilience, just as we are seeing now. However, the market can quickly go back into correction mode and, should that happen, Columbus will shift to prudence to protect investor's capital. This type of behavior is normal for Columbus during market tops and should therefore be expected given the current context.

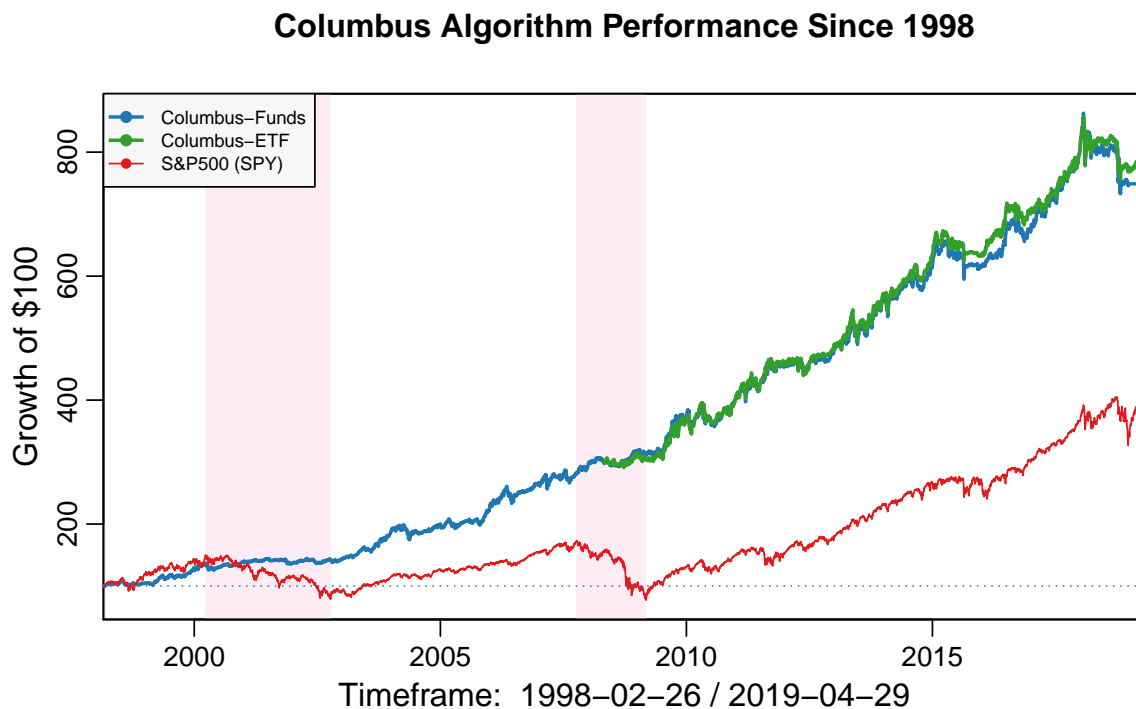
Should you have any questions or concerns, please don't hesitate to contact me.

APPENDIX A - Columbus Algorithm Long Term Performance

The figure below illustrates the Columbus Algorithm performance since 1998 using two similar investment universes:

- The **Columbus-ETF** curve (in green) represents the Columbus Algorithm applied to our 15 ETF universe. This curve is identical to the Columbus curve in Figure 1 and is reproduced here for reference.
- The **Columbus-Funds** curve (in blue) is a very similar universe to the Columbus-ETF universe except that it uses mutual funds instead of ETFs. Although not ideal for trading, this universe has a longer history and is therefore useful to demonstrate the performance of the Columbus Algorithm going back 20 years to February 1998.

The two regions in pink represent the dotcom crash and the financial crisis bear markets.



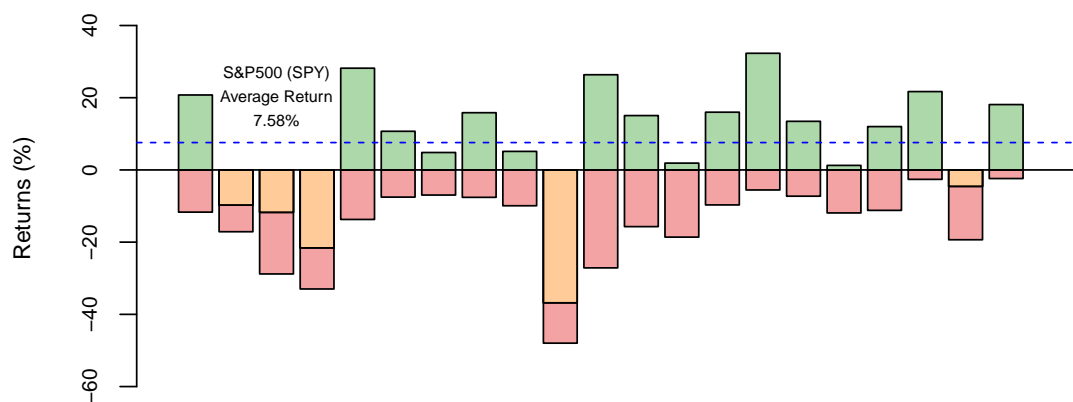
	S&P 500	Columbus-Funds (1998)	Columbus-ETF (2008)
Annualized Returns (%)	6.77	9.77	8.97
Maximum Drawdown (%)	-55.2	-15.06	-11.58
Annualized Sharpe Ratio	0.36	1.18	0.97
Pos. Rolling Years (%)	76.41	92.14	92.73

Note: Statistics for Columbus-Fund and the S&P 500 are calculated since February 1998. Statistics for Columbus-ETF are calculated since May 2008.

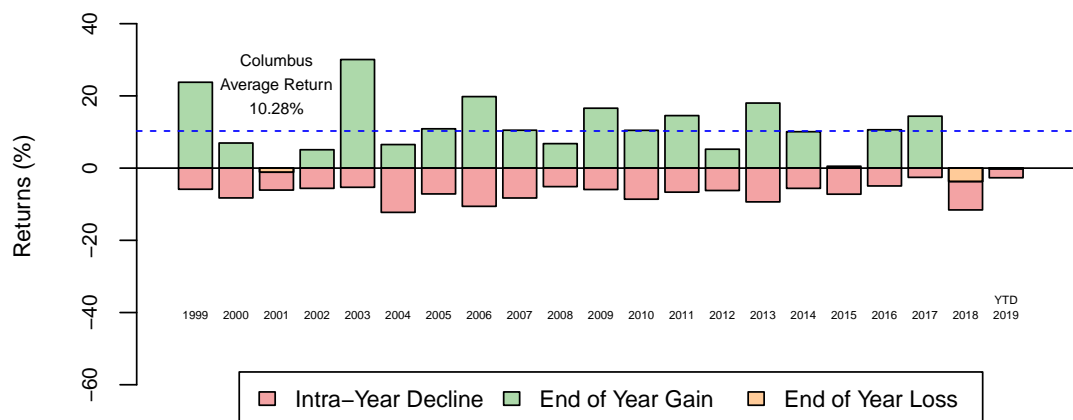
The following figure shows the annual performance of **Columbus-Funds** and the S&P 500 for each year since 1999. A green bar means a positive gain was achieved during the calendar year. An orange bar means a loss was endured during the calendar year. The red bar shows the maximum decline in value during the calendar year.

The average returns are the simple average return for the years shown. This is not the same as the annualized returns shown on the previous page.

S&P 500 Annual Performance



Columbus Annual Performance



APPENDIX B - Columbus Detailed Performance Analysis

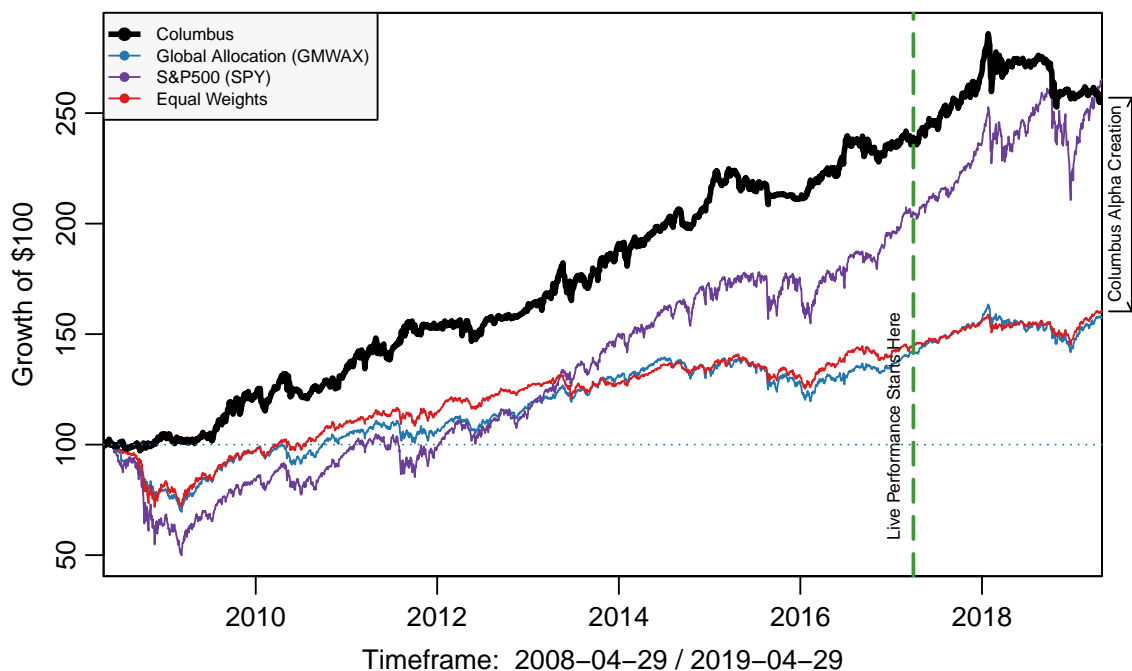
The chart below illustrates the performance of Columbus since 2008 compared to the following benchmarks:

- The **S&P 500 Index** using the SPDR S&P500 ETF (SPY)
- A **Global Allocation Benchmark** using the GMO Global Asset Allocation Fund (GMWAX)
- The **Equal Weights Portfolio**, which consists of equally weighting all 15 assets in the Columbus universe and rebalancing daily. The Equal Weights Portfolio includes 5 equity ETFs, 5 fixed income ETFs, 3 real assets ETF and 2 cash equivalent ETFs, creating the following asset class mix: 33% equities, 33% fixed income, 20% real assets and 13% cash or equivalents.

Comparing Columbus (black curve) to the Equal Weights Portfolio (red curve) illustrates how the Columbus algorithm consistently adds value over time by distancing itself from the performance of its universe. This can be seen as the growing divergence between the two curves over time. It shows how the algorithm consistently produces an excess return (alpha creation) above its equivalent no-skill portfolio, the Equal Weights Portfolio.

The table below shows some key performance metrics for Columbus and these benchmarks.

Columbus Performance and Key Benchmarks



	Columbus	Global Allocation	S&P500	Equal Weights
Annualized Returns (%)	8.97	4.23	9.29	4.39
YTD Gain / Loss (%)	-0.2	8.99	18.1	8.46
YTD Annualized Gain/Loss (%)	-0.64	30.7	67.8	28.76
Maximum Drawdown (%)	-11.58	-31.86	-51.49	-29.77
Annualized Standard Dev. (%)	9.22	9.75	19.83	9.45
Positive Rolling Years (%)	92.73	78.66	90.5	84.46
Annualized Sharpe Ratio	0.97	0.43	0.47	0.46
MAR Ratio	0.77	0.13	0.18	0.15

Returns and Drawdown Analysis

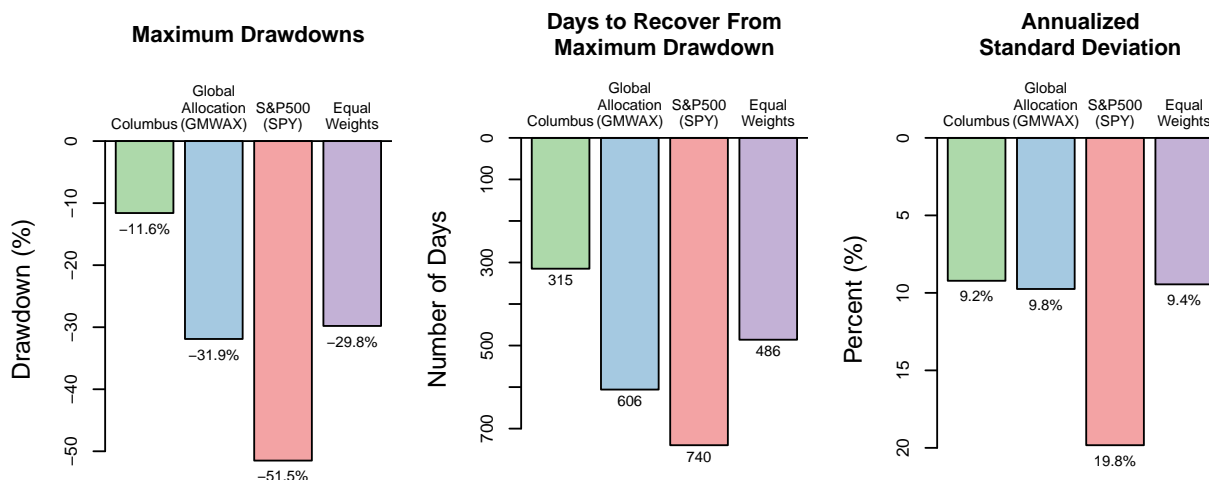
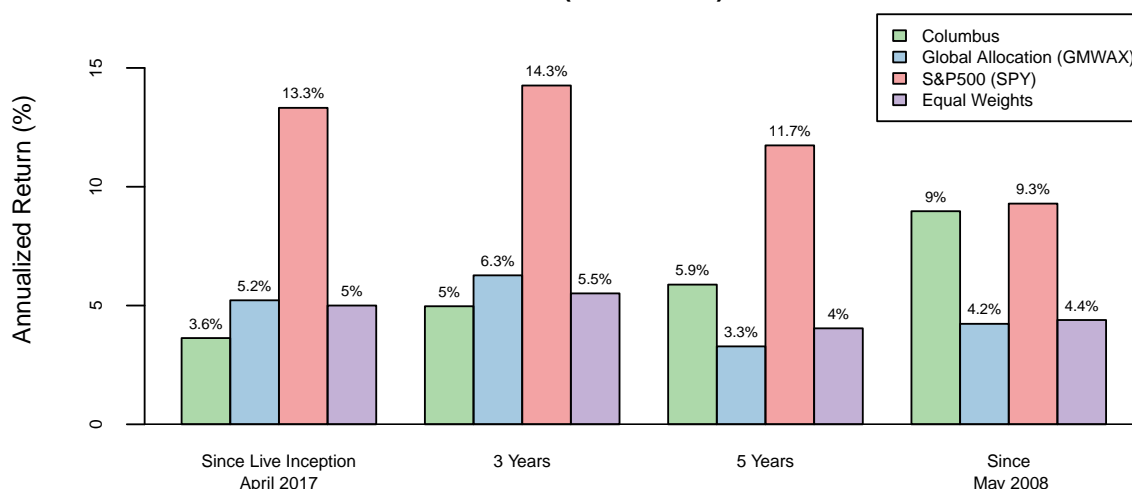
The top bar charts below show the returns over various timeframes. All returns are annualized (compounded annually) except for the returns shown since the live Columbus inception in our model account, which is a simple return since the beginning of April 2017.

The bar charts at the bottom show the maximum drawdowns for Columbus and the benchmarks, along with the number of trading days it took to fully recover from this drawdown. Note that there are 252 trading days in a year, so in the case of SPY, 740 days implies that it took almost 3 years to recover from its 51.5% drawdown.

Also note that this analysis starts on May 1, 2008, well after the market peaked in late 2007. This is because certain ETFs in the Columbus universe were not available earlier.

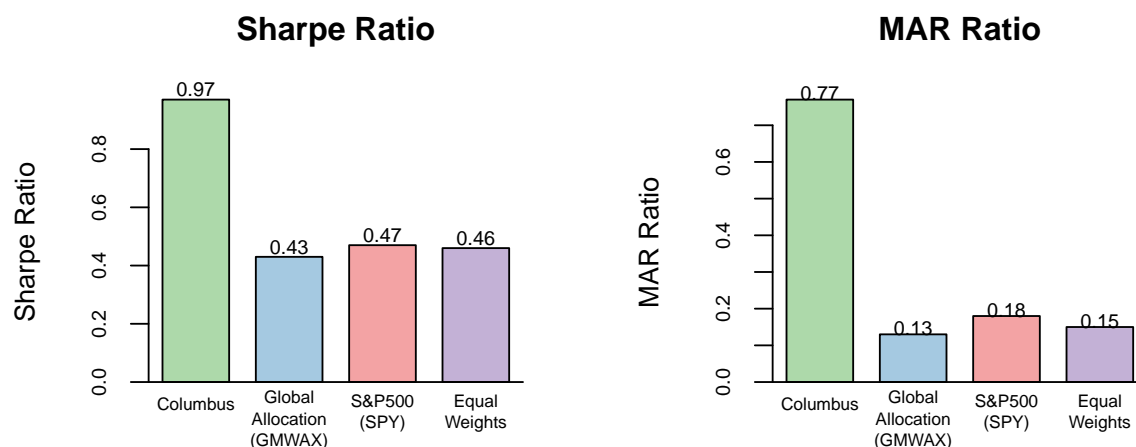
We performed a similar analysis starting in 1998 using a mutual funds universe as a proxy for the Columbus ETF universe. This analysis is particularly informative because it includes both the dotcom crash and the entire financial crisis. Please contact us to obtain a copy of this analysis and to learn more about our robustness testing methodology.

**Columbus Performance vs. Key Benchmarks
(Annualized)**



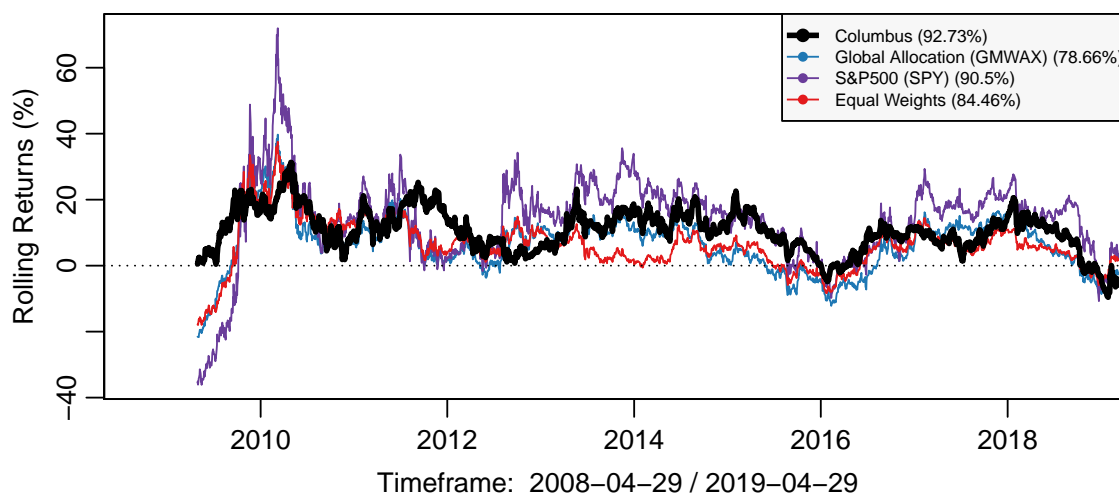
Sharpe, MAR and Rolling 12 Months Analysis

The bar chart below on the left shows the Annualized Sharpe ratio for Columbus and its benchmarks. The Sharpe ratio is calculated assuming a risk-free interest rate of 0%. Also shown on the right is the MAR ratio for Columbus and its benchmarks.



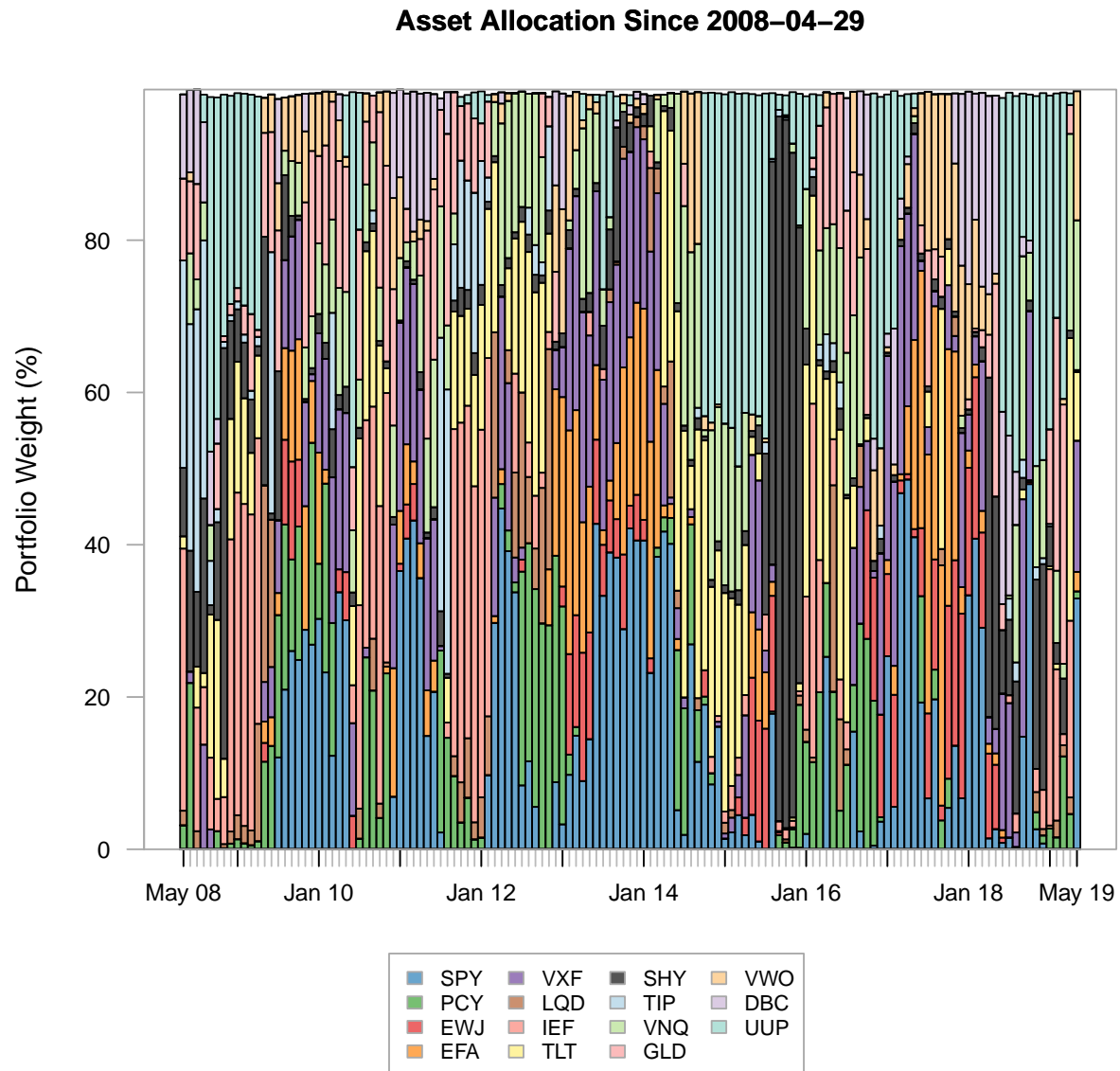
The next chart shows the rolling 12 months performance. This illustrates how an investor would have fared 12 months out assuming that same investor had invested at any given time during the time frame. The percentages shown in the legend are the percentage of the time the 12 month return was positive during the time frame.

Rolling 12 Months Performance



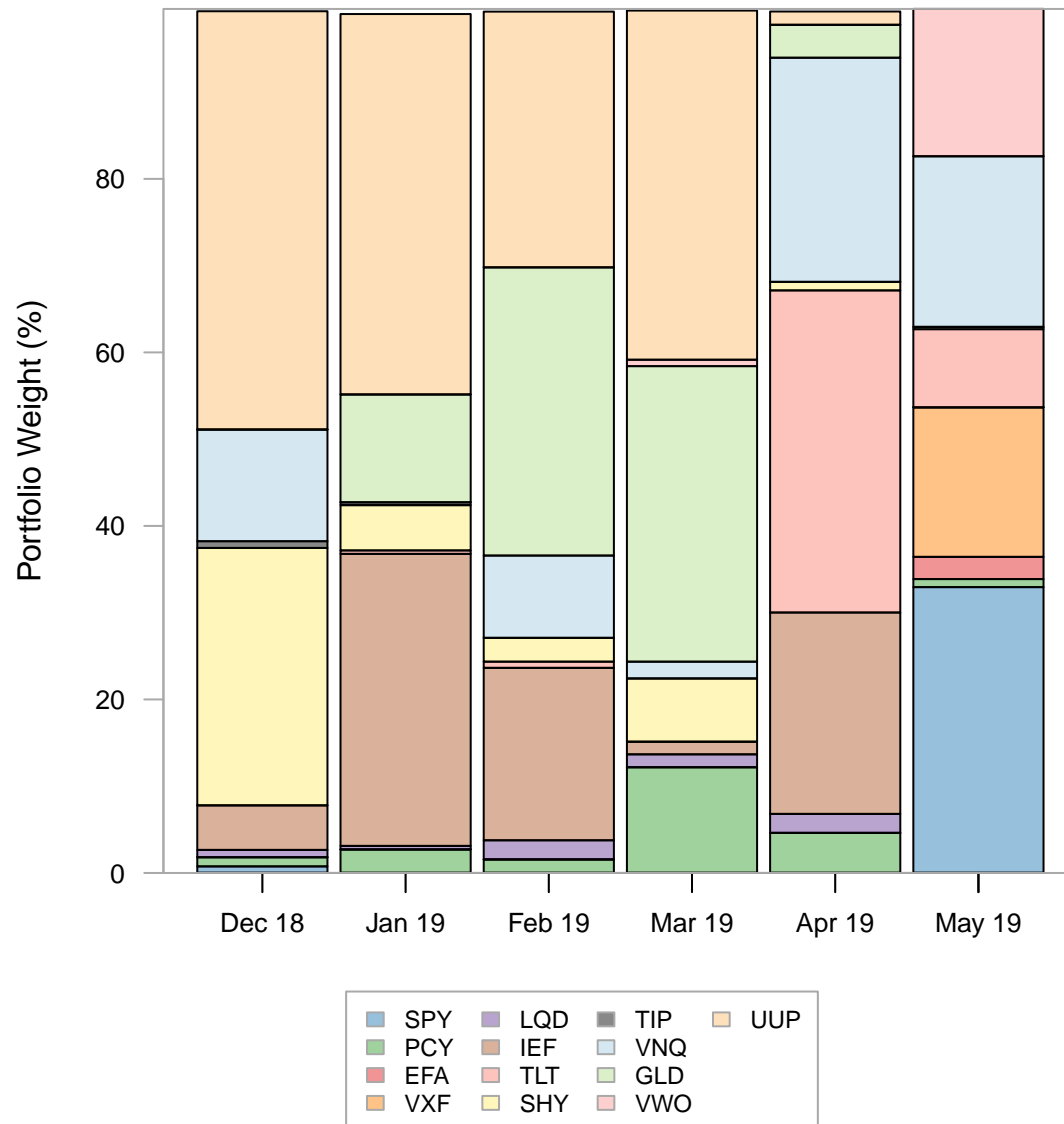
APPENDIX C - Historical Weight Allocations

The following chart shows the historical Columbus asset allocation since 2008.



The following chart shows the relative asset allocation during the most recent 6 months.

Asset Allocation During Latest 6 Months
Number of Securities Traded: 13



APPENDIX D - Columbus ETF Universe

The Columbus ETF universe is designed according to the following criteria:

- It is based on ETFs representing the major tradable asset classes available in global finance.
- Each ETF trades on the US markets and provides ample liquidity through its size.
- The level of correlation between each ETF is generally low enough to provide diversification.

The table below provides a short description of each ETF with their total assets and annual expense ratios.

Symbol	Assets	Exp. Ratio	ETF Name and Description
SPY	\$ 242B	0.09%	SPDR S&P500 Index
EFA	\$ 79B	0.33%	iShares MSCI EAFE Index
VWO	\$ 82B	0.14%	Vanguard FTSE Emerging Market Equities
VXF	\$ 58B	0.08%	Vanguard Extended Market (US small & mid caps, ex-S&P500)
EWJ	\$ 17B	0.48%	iShares MSCI Japan Equities
VNQ	\$ 65B	0.12%	Vanguard REIT Index
GLD	\$ 32B	0.40%	SPDR Gold Trust (Gold Bullion)
DBC	\$ 1.9B	0.89%	PowerShares DB Commodity Index Tracking Fund
IEF	\$ 7.3B	0.15%	iShares 7-10 Year Treasury Bonds
TLT	\$ 7.4B	0.15%	iShares 20+ Year Treasury Bonds
TIP	\$ 23B	0.20%	iShares TIPS Bonds
LQD	\$ 38B	0.15%	iShares iBoxx \$ Investment Grade Corporate Bond Fund
PCY	\$ 4.7B	0.50%	PowerShares Emerging Markets Sovereign Debt Portfolio
UUP	\$ 515M	0.75%	PowerShares DB US Dollar Bullish Index Fund
SHY	\$ 11B	0.15%	iShares 1-3 Year Treasury Bonds (Primary Cash Asset)
AVERAGE	\$44.6B	0.31%	

Note that certain asset classes were considered large enough to warrant being covered by two separate ETFs. This is the case with US stocks, where SPY provides exposure to the large capitalization stocks while VXF provides exposure to small and mid-sized capitalization stocks.

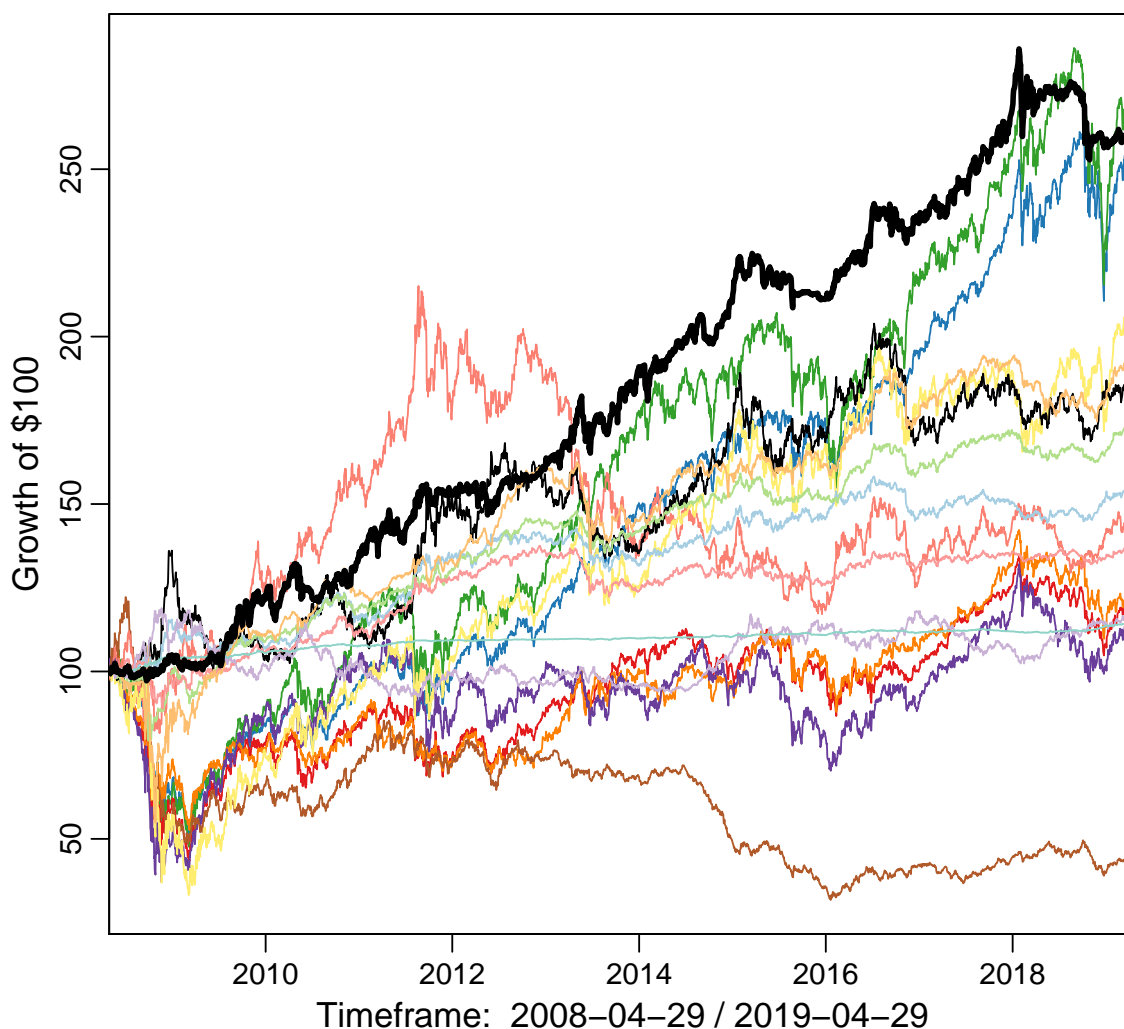
Similarly, EFA provides exposure to international large capitalization stocks, which includes a wide range of countries. However, we also added Japanese stocks as a separate ETF (EWJ) despite some exposure to the Japanese market through EFA via large multinational Japanese companies. This choice is justified because Japan is a major global equity market that is generally uncorrelated with other major developed equity markets. Thus, adding Japan to the mix provides an additional de-correlation component to the universe.

Columbus Performance vs. Assets in its Universe

Producing alpha from an investment universe requires an algorithm that can consistently allocate the right amount of funds to the most optimal assets, and to do so at the proper time. The objective is to minimize drawdowns during downturns while capturing most of the positive returns offered by these assets during an upturn.

The following chart illustrates how Columbus compares against all assets forming its investment universe. The Columbus equity curve is shown as the thick black line.

Columbus vs. All Assets in its Universe



IMPORTANT DISCLAIMER

Your use of our services is equivalent to your signature as evidence of your acceptance of the following terms and conditions.

You acknowledge and agree that Laplace Insights is not licensed to be an investment advisory service, a financial planner, an investment advisor or a securities advisor. Laplace Insights does not (i) recommend or endorse specific securities; (ii) provide personalized advice to any person nor (iii) provide advice tailored on the needs of any person.

Laplace Insights does not guarantee and makes no warranties or representations with respect to the sequence, accuracy or completeness of any information or data furnished hereunder, nor does it represent that the information or data disseminated may be relied upon for trading purposes and you agree that you will independently determine the opportunity of the trades to be made on any securities.

FURTHERMORE, THE RESEARCH IS PROVIDED ON AN "AS IS" BASIS AND NO GUARANTEES, REPRESENTATIONS, CONDITIONS AND WARRANTIES, EXPRESS OR IMPLIED, INCLUDING BUT NOT LIMITED TO ANY WARRANTY OF FITNESS FOR A PARTICULAR PURPOSE OR MERCHANTABILITY, ARE MADE BY LAPLACE INSIGHTS.

LAPLACE INSIGHTS SHALL NOT BE RESPONSIBLE OR HAVE ANY LIABILITY FOR ANY DAMAGES, HOWSOEVER CAUSED, RESULTING FROM THE USE OF OR INABILITY TO USE THE RESEARCH OR ANY ERRORS, DELAYS OR INTERRUPTIONS IN THE TRANSMISSION OF DATA OR OTHER INFORMATION IN THE RESEARCH. IN NO EVENT SHALL LAPLACE INSIGHTS BE LIABLE FOR ANY LOSS OR DAMAGE OR LIABILITY SUFFERED OR INCURRED BY YOU OR ANYONE USING THE RESEARCH IN THIS DOCUMENT.

To the extent any of our research is used to form opinions and/or recommendations or are interpreted as such, they should not be construed as investment advice and is not an offer to buy or sell, or a solicitation of an offer to buy or sell, the securities of any issuer. You should not assume that any recommendations, insights, charts, theories, or philosophies will ensure profitable investment and consulting and advice from a professional licensed financial advisor, including a tax advisor, shall always be made to determine the suitability of any investment. Laplace Insights recommends that anyone making an investment or trading securities do so with caution. You should perform full due diligence and investigate any security fully (including the careful review of annual reports and other publicly available company information (including any prospectus) to complete your own due diligence in any investment) before making an investment, an investment recommendation or before the execution of a security trade based upon information learned through our research. Neither Laplace Insights nor anyone affiliated with us is responsible for any investment decision you make, and we will not be responsible for determining the suitability, appropriateness or advisability of any transaction that you may enter into in connection with such investment decision. You acknowledge and agree that past performance is not necessarily a guide to future performance. You represent and warrant to Laplace Insights that your use of our research will comply with all applicable laws, rules and regulations and with the policies and practices of securities and future exchanges and associations, alternative trading facilities, and self-regulatory organizations, and the policies and procedures (whether stated orally or in writing) applicable to our research.

Laplace Insights reserves the right to make any and all changes to these terms and conditions at its sole discretion without notice. These terms and conditions have been made in the Province of Quebec (Canada) and shall be construed and enforced in accordance with the laws of the Province of Quebec (Canada) and the federal laws of Canada applicable therein. Any action to enforce these terms and conditions shall be brought in the courts located in the Province of Quebec (Judicial District of Montreal) to the exclusion of any other courts. If any provision is deemed to be unlawful or unenforceable, that shall not affect the validity and enforceability of the remaining provisions.